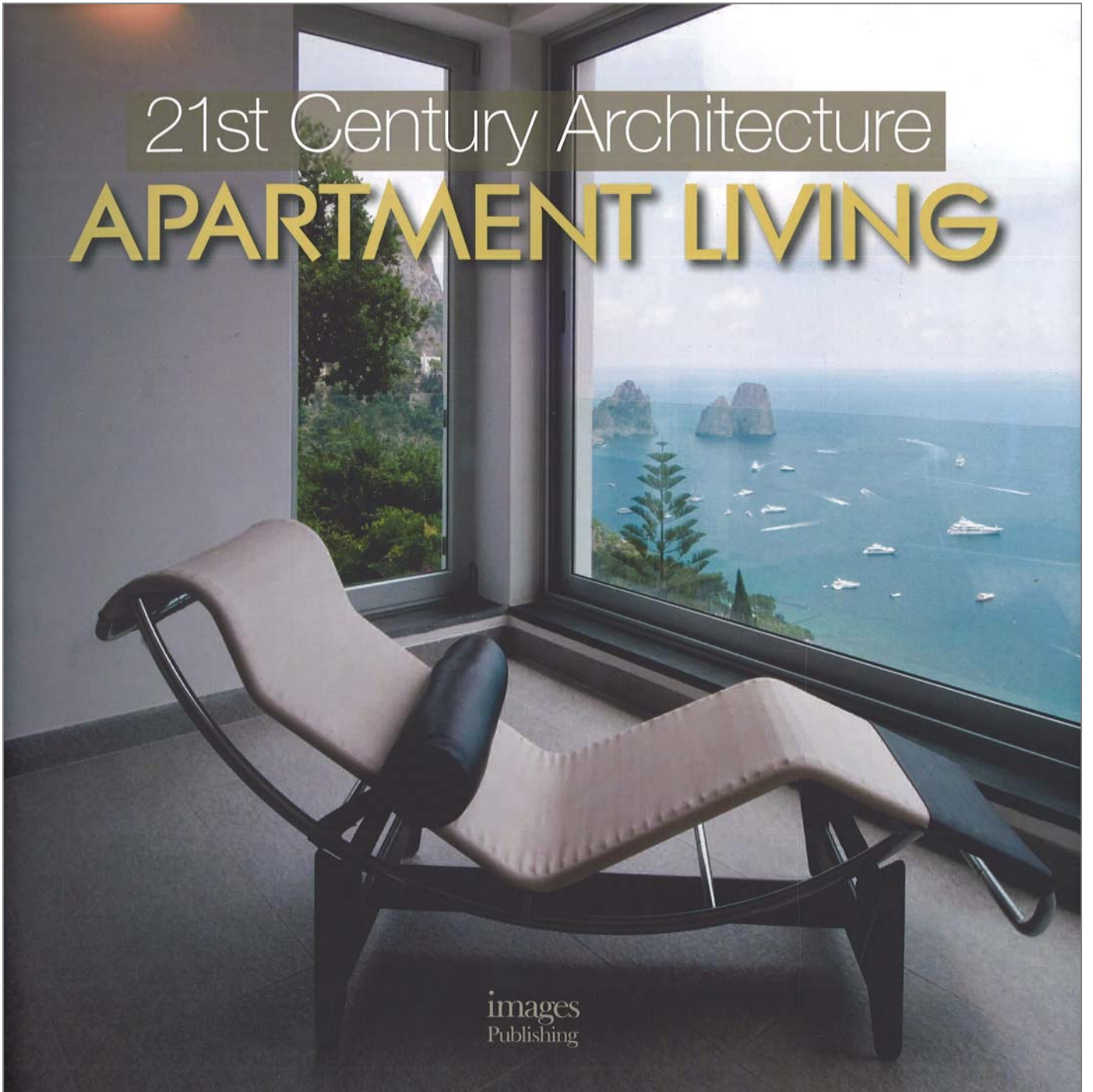
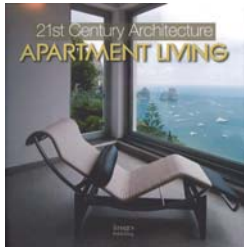


21st Century Architecture
APARTMENT LIVING



images
Publishing



Kent Street Apartment

SYDNEY, NSW, SOUTH WALES, AUSTRALIA RLD

Working within the parameters of a distinct period style can prevent the risk of monotonous replication. For the designer of this apartment interior, it was important that the existing Art Deco style was treated as an essence to which fresh ideas and contemporary elements could be added. Elegance, glamour, function and modernity are at the forefront of this design, remaining true to the Art Deco style.

Formal areas, such as the living and dining room, were adorned in luxurious materials. Silks, mohair, polished and aged metals, waxed leather, hides, imported European natural stone and highly polished timbers were used to reinforce the formality of these spaces. A variety of kneses—selected for their relaxed, tactile qualities—feature in casual areas such as the family room and study.

Environmentally sustainable design principles played a large role in the decision to reuse existing furniture—in particular the beds, living room sofas, dining room chairs and study sofas. Furthermore, the use of local manufacturers and suppliers assisted with a reduction in the embodied energy of materials. Sustainable window furnishings were chosen to counter the effects of direct exposure to eastern and western sunlight.

Tonal variations within the monochromatic palette maintain visual interest. Materials of various textures—from polished to highly tactile surfaces—were chosen for their aesthetic appeal as well as their reflective qualities.

DESIGNER: ION STRONG

Credits: Andrea Ottoni (Director) and Louise Spence (Designer)

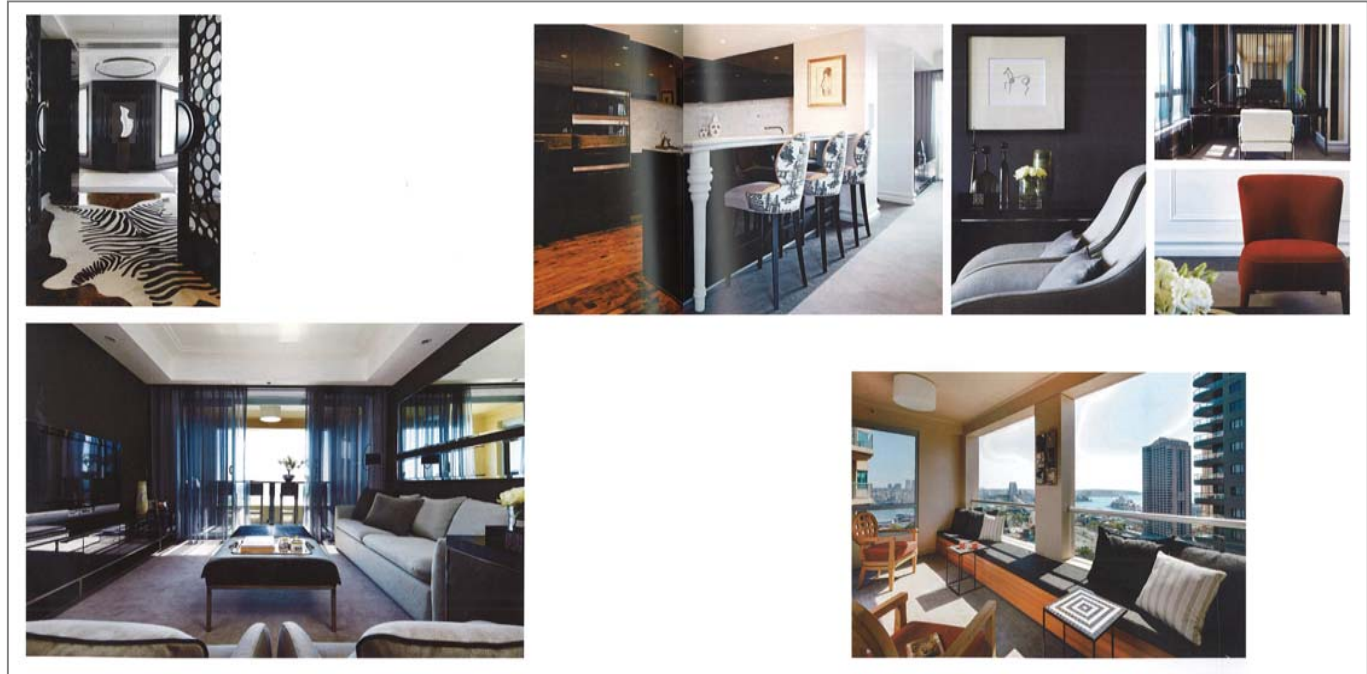
Floor area: 270 square metres / 2,900 square feet

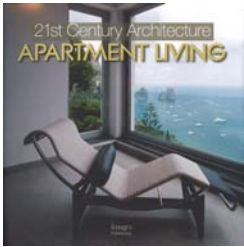
Program: Conversion of an existing apartment with an Art Deco influence into an elegant, contemporary 270 square metre space

Volume height: 2.7 metres / 9 feet

Rooms: Two bedrooms (one with ensuite), family/living bedroom, kitchen, entry foyer, formal dining and living, family room and two bathrooms.

Green features: Re-use of existing furnishings, use of local manufacturers and suppliers, and sustainable materials.





Norman Reach Penthouse

NORMAN REACH, QUEENSLAND, AUSTRALIA RLD

138

Credits: Andrea D'Onofrio (Director), Billy Fleming (Designer) and Lisa Hunt (Designer)

Floor area: 133 square meters / 1430 square feet (apartment), 170 square meters / 1820 square feet (balconies)

Program: New penthouse apartment

Building height: 42. Emerging from 2.4 to 5 meters / 8 to 16 feet

Rooms: Formal living/dining, family room, kitchen, four bedrooms, study, one bathroom, two ensuite and a powder room, four balconies

Ventilation: Fan-assisted natural ventilation and mechanical ventilation

Level of finishes: Acoustic floor underlay and solid walls

Special features: Hardbody epoxy with deep balcony overhang for summer sun deflection

The beauty of this penthouse is in the generosity of its spatial volumes. The contemporary interior design language maintains a "less is more" approach.

Embracing intentionally understated ideals, the client's admiration of the simplicity and melody of 1950s style formed the design platform. The apartment features original pieces of furniture from this era along with a selection of contemporary pieces that were added to the mix in recognition of the modern architectural context.

Spaces such as the formal living/dining area, the kitchen/family room and two outdoor terraces all interconnect seamlessly. As each terrace is visible from the other, a congruent design language was applied, while subtle variances maintain interest throughout.

The predominantly cool palette is juxtaposed with the sub-tropical Brisbane climate. Driven by the natural plywood finish of the formal living room ceiling and an instinctive human desire for warmth, the designer chose natural and neutral tones to form a balance within the cool palette. Materials such as leather, hide, wood, timber and stone feature dominantly—in line with the client's appreciation of traditional materials.

PHOTOGRAPHER: IAN DUNN/PHOTO

